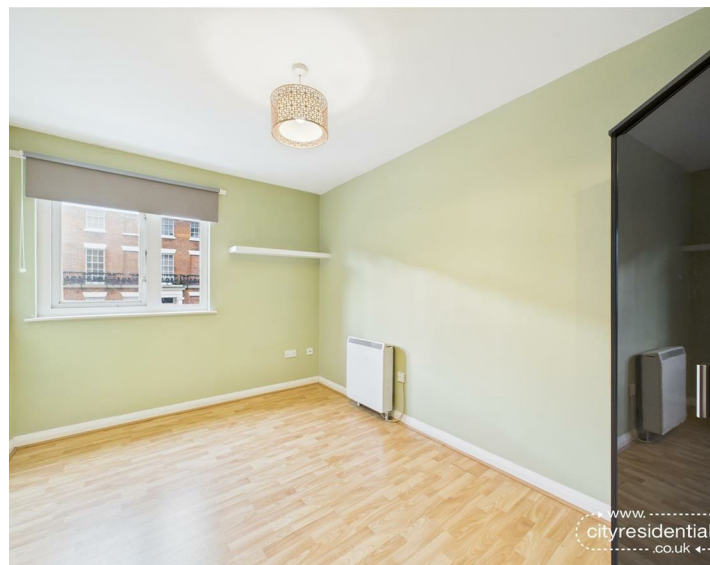




8 Mosslake 45a Canning Street, Liverpool, L8 7TA

Asking Price £150,000 Leasehold

www.  
cityresidential  
.co.uk





About the Property

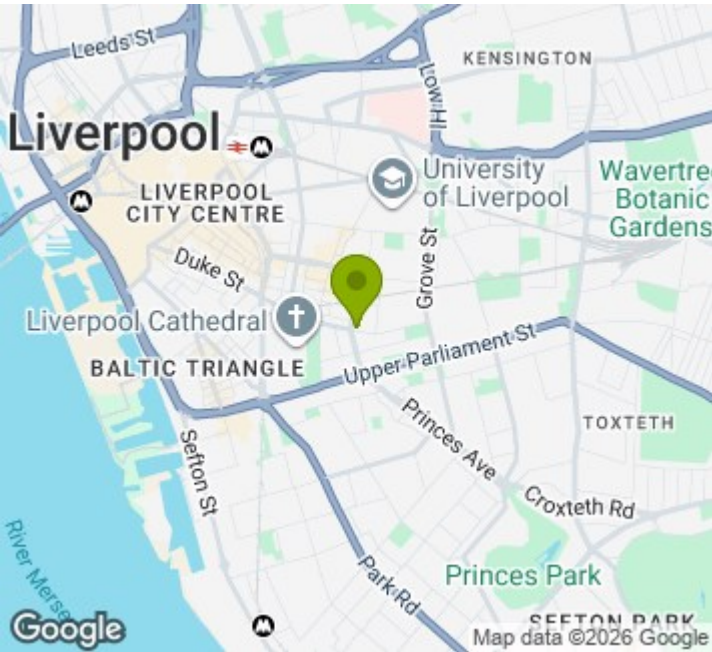
Situated in the highly sought-after Georgian Quarter of Liverpool, this superb two bedroom, one bathroom apartment offers an exceptional opportunity to live in one of the city's most desirable locations. Surrounded by elegant Georgian townhouses, the area boasts a truly beautiful and historic aesthetic.

The property comprises two well proportioned bedrooms, a modern bathroom, and a bright open plan living and kitchen area, enhanced by a Juliette balcony overlooking Canning Street and offering stunning views of the iconic Anglican Cathedral.

Further benefits include secure parking to the rear of the building and vacant possession, making it ideal for both owner occupiers and investors alike.

Contact us today on 0151 231 6100 to arrange a viewing!

- Fantastic two bedroom apartment
- Sought after Georgian Quarter location
- Juliette balcony overlooking Canning Street
- Views of the Anglican Cathedral
- Secure car park to the rear
- Chain free



Energy Efficiency Rating

	Current	Potential
Very energy efficient - lower running costs		
(92 plus) <b>A</b>		
(81-91) <b>B</b>		
(69-80) <b>C</b>		<b>79</b>
(55-68) <b>D</b>	<b>69</b>	
(39-54) <b>E</b>		
(21-38) <b>F</b>		
(1-20) <b>G</b>		
Not energy efficient - higher running costs		
<b>England &amp; Wales</b>	EU Directive 2002/91/EC	



City Residential  
81/87 Victoria Street, The Old Haymarket, Liverpool L1 6DG  
T: 0151 231 6100 F: 0151 231 6105  
E: sales@cityresidential.co.uk



WWW.  
**cityresidential**  
.co.uk